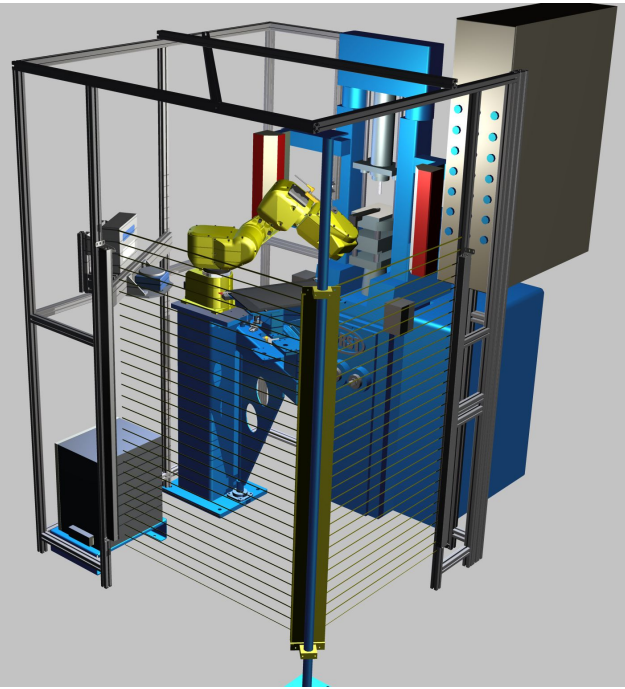


Model TL Tray Loader



SPECIFICATIONS

FANUC LR Mate 200iC 6-axis robot with controller and color teach pendant

Up to 280mm x 400mm tray size

Mechanical gripper and vacuum tooling included with part sensing

Robot base with swing-away tray holder

5.7" monochrome operator interface

Aluminum extrusion/woven wire safety fence

Light curtain protected operator access

Up to 20 parts per minute (no weighing)

Specifications subject to change without notice. Please contact ACE for application suitability.

OPTIONS

- Part weighing with pass/fail operation includes digital display of part weight
- Press fill compensation includes servo belt driven actuator and user selectable compensation scaling
- Quick change tooling
- Die punch cleaning via mechanical brush
- Programmable Limit Switch (required for press interface)

The ACE Model TL Tray Loader is a flexible small parts handling system used for palletizing delicate parts onto carbon, ceramic or graphite trays prior to firing in a furnace. This system uses the latest in 6-axis robot technology to provide years of trouble-free service.

FEATURES

BENEFITS

Graphical Operator Interface with:

- Part number selection
Input part length and width for automatic calculation of row and column spacing assuring maximum tray density.
- Fault/status messaging
Displayed for operator use in troubleshooting and setup.
- User-selectable intervals for manual die cleaning
Provide timely die cleaning, resulting in improved part yield. Countdown feature alerts operator prior to machine stoppage.

Swing-away tray holder

Easy access to die set for tooling changes.

Three-mode operation

Flexibility in part placement on tray.

- Pick/Place
- Pick/Invert
- Pick/Lay-down

Part weighing (optional)

Provides quality check at the press.

Press compensation (optional)

Allows automatic adjustment of press fill depth based on part weight, eliminating operator intervention.

ACE

AUTOMATED CELLS & EQUIPMENT, INC.

3435 Enterprise Drive
Painted Post, New York 14870
Tel: 607.936.1341
Fax: 607.936.1531
www.autocells.com
Email: info@autocells.com